

LOWER SALFORD TOWNSHIP NEWSLETTER



Spring/Summer 2020 • Published by the Board of Supervisors • Founded 1741



INSIDE THIS ISSUE

Contact Information	2
Police Department.....	3
Update: Sidewalk Transportation Alternative	4
Lower Salford Historical Society...4	
Household Hazardous Waste Collections.....	4
Harleysville Fire Co. Station 89	5
Toys for Tots 2019.....	6
Eye on Development	6
Covid-19 Protection.....	7
2020 Summer Ticket Discounts	7
County Bridges Update	7
Spotted Lanternfly Battle.....	8
Lower Salford Township Authority	9
Supervisors Aim to Launch Communication Committee.....	10
Meet New Supervisor Kevin Shelly.....	10
Recycle Clothing and Electronics	11
Volunteer Spotlight	13
Indian Valley Public Library.....	14
Trail System Expanding.....	15
Don't Mow Stream Edge.....	15
Grilling Safety	16

Message From the Chairman

Dear Residents:

I usually try to provide you with some levity in these messages, but it's difficult as we face the unknown proportions of the Covid-19 virus as this is being written. I am being optimistic that the precautions mandated and employed will have minimized the impact.

To brighten my thoughts, at least that rodent in Punxsutawney finally got one right. Our winter was much less severe than usual, resulting in minimal disruptions to traffic and our budget. The mild weather allowed our Public Works crew to get a good head start on spring preparations. This always lightens my mood and, hopefully, yours as well.

As I write, renovations and renewal are starting at Leddy's at the Lederach Golf Course. Why not stop by and judge for yourself how it turned out? The recent financial upturn at the golf course has allowed a number of deferred maintenance items to be addressed. Fingers crossed that 2020 maintains a similar result. What we've learned is that the weather dictates the course's financial success to such a large degree that any positive thoughts you can send on that topic will be appreciated. Think warm and sunny. It's good for plants too!

Renewal is evident on the Board of Supervisors as well. We welcomed Kevin Shelly to the Board as a new Supervisor elected in November 2019. Kevin was sworn in on January 6 and has quickly become immersed in the intricacies of local government. We all wish him well.

Douglas Gifford

Chairman, Lower Salford Board of Supervisors

Election 2020 Information

This year's Primary Election has been rescheduled to June 2; the General Election is November 3. Polls for both days are open from 7 a.m. until 8 p.m.

PLEASE NOTE: In 2019, Montgomery County implemented a NEW VOTING SYSTEM that uses a paper ballot. To become familiar with this format, please visit the Montgomery County Voter Services webpage at <https://www.montcopa.org/3112/New-Voting-System>.

Thinking about voting by mail or by absentee ballot? Visit the Montgomery County Voter Services page at: <https://www.montcopa.org/753/Voter-Services>. This page also provides a host of other voting information including registration and important dates on the calendar.

If you do not have internet access, please call Montgomery County Voter Services at 610-278-3280.

Not sure where your polling location is located? Visit the Township website at lowersalfordtownship.org/your_community/voter_districts or give us a call at 215-256-8087. The Township encourages everyone registered to vote to cast your ballot in both the Primary and the General elections.



Visit our website at: www.lowersalfordtownship.org

NASE
DENTAL GROUP



We see Kids TOO!

Family Microdentistry & Implants
The Indian Valley Snore Stop

(215) 513-NASE Dr. John B. Nase
One Doc, One Office
Ultimate Care



www.NaseDentalGroup.com

Bucks County's Finest Luxury Townhome Rentals



**DOYLESTOWN • CHALFONT
PERKASIE • SELLERSVILLE**

HERITAGE
Property Management

PETS STAY FREE!

888.214.0234

HeritagePropertyRentals.com



Dreams unlimited BUILDERS

PA 00067
215-256-4497
DreamsUnlimitedBuilders.com
lgolfer@comcast.net
PO Box 416 • Harleysville, PA 19438



Building New Traditions, One Dream at a Time.

Care & Share THRIFT SHOPPES

MCC

ONE PURCHASE CAN MAKE A BIG DIFFERENCE

Spend the day with us Shop: M-W, 9-6; Th-F, 9-8; Sat, 9-6
Souderton Center • 783 Rt. 113, Souderton PA

careandshareshops.org • 215-723-0315



STARTING AT \$2,990

THE Birches
Harleysville, PA

PERSONAL CARE & MEMORY CARE

Caring Super Star of 2019
Top Rated on Caring.com

2019 BEST OF SENIOR LIVING
SeniorAdvisor.com

Proudly serving our community with award-winning care for 10 years!

691 Main Street • Harleysville, PA 19438
www.TheBirchesAtHarleysville.com • 215-541-3700



EMPLOYEE-OWNED

IT LANDES

WE RECOMMEND. YOU DECIDE.™

PLUMBING • HEATING & COOLING • FUEL OIL

Now Hiring!
Join a Leading Employer



itlandes.com | 215.256.4221

PA023382

Lower Salford Township Contact Information

379 Main Street • Harleysville, PA 19438 — www.lowersalfordtownship.org

Township Office: 215-256-8087 • Fax: 215-256-4869 • Office hours: Monday through Friday, 8:30 a.m. to 4:30 p.m.

General Township Email: township@lowersalfordtownship.org

Supervisors Meetings

The Board of Supervisors meets the first Wednesday of each month at 7:30 p.m.

Informal work sessions are held at 7:30 a.m. on the day before the regular meeting and the third Wednesday of each month.

At the work sessions, staff updates the Board on Township activities. No formal action takes place at these meetings.

Township Supervisors

Douglas A. Gifford – *Chairman*

Douglas Johnson – *Vice Chairman*

Keith A. Bergman

Christopher R. Canavan

Kevin Shelly

Montgomery County Commissioners

Dr. Valerie Arkoosh, Chair
Kenneth E. Lawrence Jr., Vice Chair
Joseph C. Gale, Commissioner

Court House
Swede and Airy Streets
PO Box 311, Norristown, PA 19404

610-278-3000
www.montcopa.org

Our Senator in the Pennsylvania General Assembly

Senator Bob Mensch (24th District)
www.senatormensch.com • bmensch@pasen.gov

<i>Montgomery/Bucks County Office:</i> 56 West Fourth St., Floor 2 Red Hill, PA 18076 215-541-2388 • fax: 215-541-2387	<i>Harrisburg Office:</i> Senate Box 203024 Harrisburg, PA 17120-3024 717-787-3110 • fax: 717-787-8004
---	---

Our Representative in the PA General Assembly

Marcy Toepel (147th District)
www.reptoepel.com • mtoepel@pahousegop.com

<i>District Office:</i> 410 Main St., Suite 200 Harleysville, PA 19438 215-256-6030	<i>Harrisburg Office:</i> 116 Main Capitol, PO Box 202147 Harrisburg, PA 17120-2147 717-787-9501 • fax: 717-783-2010
--	---

Pennsylvania Governor

Governor Tom Wolf

www.governor.pa.gov • governor@pa.gov
508 Main Capital Building • Harrisburg, PA 17120
717-787-2500 • fax: 717-772-8284

Lower Salford Police Department

Emergencies: 911

379 Main Street • Harleysville, PA 19438

Office: 215-256-9500 • Fax: 215-256-1212

Police Dispatch:
215-256-9595 police@lowersalfordtownship.org

Chief of Police:
Thomas A. Medwid tmedwid@lowersalfordtownship.org

Investigations:
Sgt. Cory Moyer cmoyer@lowersalfordtownship.org

Patrol and Traffic:
Sgt. Bill O'Connell woconnell@lowersalfordtownship.org

IT Administrator:
Michael Antonucci mantonucci@lowersalfordtownship.org

Police Clerk:
Barbara Jansons bjansons@lowersalfordtownship.org

President of the United States

President Donald J. Trump

1600 Pennsylvania Avenue, NW, Washington D.C., 20500
www.whitehouse.gov

Pennsylvania Senators in the United States Congress

Senator Robert Casey
casey.senate.gov • email: linked through website

<i>Philadelphia Office:</i> 2000 Market St., Suite 610 Philadelphia, PA 19103 215-405-9660 • fax: 215-405-9669	<i>Washington, D.C. Office:</i> 393 Russell Senate Office Building, Washington DC, 20510 202-224-6324 • fax: 202-228-0604
---	--

Senator Pat Toomey
toomey.senate.gov • email: linked through website

<i>Philadelphia Office:</i> US Custom House 200 Chestnut Street, Suite 600 Philadelphia, PA 19106 215-241-1090 • fax: 215-241-1095	<i>Washington, D.C. Office:</i> 248 Russell Senate Office Building, Washington DC, 20510 202-224-4254 • fax: 202-228-0284
--	--

PA Representative in the United States Congress

Congresswoman Madeleine Dean (4th District)
dean.house.gov • email: linked through website

<i>Norristown Office:</i> 101 E. Main Street, Suite A Norristown, PA 19401 610-382-1250 • fax: 610-275-1759	<i>Washington, D.C. Office:</i> 129 Cannon HOB Washington, DC 20515 202-225-4731
--	---



60 Schoolhouse Road
Souderton, PA 18964
215.256.8870
www.mulchbarnsupply.com
sales@mulchbarnsupply.com



Premium Landscape Products



4259 W. Swamp Road
Suite 410
Doylestown, PA 18902

www.cksengeers.com
215.340.0600

From the Lower Salford Police Department



Find Us on Facebook

The Lower Salford Police Department has started a Facebook page. Please "like us" to receive information on the community and other news.

Be Alert. Be Informed. Be ReadyMontco



Emergencies and disasters strike quickly and often without warning. They can disrupt our lives, force us to leave our homes, or even confine us for days without essential services like electricity, phones, or water.

How ready are you and your family?

Vice Chairman Doug Johnson reminds residents that one of the first things you can do is sign up for our ReadyMontco notification system. This program delivers alerts about severe weather and other important events in Montgomery County to the devices of your choice. Whether you prefer emails, text messages, or even a good ol' fashioned phone call - you decide the option that works for you!

There is no direct cost to sign up for ReadyMontco. However, there may be charges for certain features (like receiving text messages) so it's best to double check with your service providers.

ReadyMontco replaced the ReadyNotifyPA system in June 2015 as the Montgomery County Department of Public Safety, along with its emergency management partners in the Southeastern Pennsylvania region, switched providers of our notification system.

To create an account, go to montcopa.org and click on the "ReadyMontco" link on the left side of the page.

When You Go on Vacation... Tips for Securing Your Home

Summer is a time when many residents will be leaving home for extended periods of time. A vacant home is an attractive target for thieves. Here are a few steps you can take to secure your home:

Make doors crime resistant

- Install deadbolt locks, solid doors and sturdy hinges and strike plates. (Be sure all materials meet building and fire codes.)



Secure sliding doors

- Install locks to prevent sliding or lifting.
- Drill a hole through the inside frame, and insert a nail to prevent sliding.
- Place a strong piece of wood in the track.

Prevent window entry

- Use window key locks. Keep keys in locks for quick exit in case of emergency or fire.

- For double-hung windows, drill holes downward where inside and outside sashes meet. Insert nails or bolts.
- Consider grates for basement and first floor windows. (Check local fire codes first.)

Crime-proof outside areas

- Keep yard, porch and entrances well lit. Look into motion detection lighting.
- Store tools, toys, etc., after use.
- Never hide keys outside your home.
- Keep bushes trimmed near doors and windows.



Safeguard valuables

- Engrave TV's and other household valuables with some identifiable number or label.
- Rent a safe-deposit box for small valuables.

- Have peace of mind when you're away. Inform a trusted neighbor of travel plans. Have him or her collect mail and other deliveries. Don't share your plans with strangers.
- Leave shades in their normal positions.
- Have police conduct security checks on your home while you are on vacation.

If you are interested in vacation security checks, please contact the Police Department at 215-256-9500.

UPDATE: Sidewalk Transportation Alternative Set-Aside Project along Harleysville Pike

Together with Township Traffic Engineer (McMahon Associates) and PennDOT, we are in the Final Design stage of a proposed sidewalk project along Harleysville Pike between Pioneer Circle and Park Avenue. This section of the sidewalk will complete a missing link connection between the existing pedestrian accommodations within the Pioneer Circle development and the shopping center and park across Harleysville Pike in this area.

The project will install approximately 400 linear feet of 5-foot wide sidewalk between Pioneer Circle and Park Avenue. The existing guide rail with turn-down end treatments will be removed and replaced with Manual for Assessing Safety Hardware (MASH) compliant Type 31-S guide rail with appropriate end treatments. Approximately 250 linear feet of a geosynthetic reinforced slope with a chain-link fence to protect pedestrians from the drop-off will be installed adjacent to the existing swale. The existing radial curb at Pioneer Circle will be replaced up to the existing curb ramp to comply with the current curb reveal requirements when adjacent to guide rail. The curb at the intersection of Park Avenue will be extended approximately 150 linear feet toward Pioneer Circle to improve the flow of stormwater in this location to the existing swale.

The Township was awarded funding for the construction of this project as part of the Transportation Alternatives Set-Aside (TASA) program through the Delaware Valley Regional Planning Commission. The engineering phase is expected to be completed in August 2020 with all required state and federal approvals. Construction is scheduled for the first half of 2021.



LOWER SALFORD HISTORICAL SOCIETY

Heckler Plains Folklife Society

2020 Calendar of Events

Tuesdays in the Garden

May 1 – September 1 at 7 p.m.

Plant Exchange

June 6, 9 a.m. - 1 p.m. – Plant Exchange
Bergey Mill Farm

Ice Cream Social

July 19, 6 p.m. - 8 p.m.
Jacob Reiff Farm

Hecklerfest

August 15, 10 a.m. - 3 p.m.
Heckler Plains Farm

Montgomery County History Fair

September 19, time TBD
Heckler Plains Farm

Carol Night

December 11, 7 p.m.
Heckler Plains Farm

Follow us on Facebook.

Due to the recent COVID-19 virus, please check the Township website (www.lowersalfordtownship.org) for possible cancellations or rescheduling of events.



Household Hazardous Waste Collections

As of the time this newsletter went to press, the County had already canceled collection events scheduled for April 25, May 2 and May 16 due to the COVID-19 pandemic.

Please check the county website <https://www.montcopa.org/706/Household-Hazardous-Waste-Collection-Pro> for updates.



HARLEYSVILLE FIRE COMPANY STATION 89



Residents of Lower Salford Township,

There are many exciting things occurring at the fire company that we look forward to sharing with all of our residents and businesses. For one, we are ramping up for the celebration of our 100th anniversary in 2022; a committee has been formed to plan the events to commemorate that wonderful milestone.

Thanks to the community's generosity, our 2019 fund drive mailer was a huge success. We had a record year for donations via the fund drive and we have you to thank for that. This is a major portion of our annual funding and allows us to save toward capital projects. The scheduled replacement and maintenance of our apparatus is one of the most important things we do to maintain a safe and effective operation, even as the costs continue to rise dramatically. Please look for our 2020 mailer in September.



We took delivery of a new 2019 Kenworth/Pierce Tanker truck in February and it was placed into service in March. This truck is a critical part of our response to areas where there are limited or no fire hydrants. It carries 3,000 gallons of water, 2 firefighters, and all the equipment needed for rural water supply operations.

While our numbers remain strong, volunteers are desperately needed in many capacities throughout the fire company operation. Please consider donating your time in such a rewarding way. You are welcomed to stop by on a Tuesday after 7 p.m., to speak with a member to learn more. Or you can contact the station. We are still growing our social media presence, so please follow us on Facebook and Instagram.

As a reminder, when we clean our yards of leaves, branches, and twigs, open burning of yard waste is strictly prohibited by township ordinance. Please see the township website for more information. If you are not sure, please contact us or the Fire Marshal and ask before having any type of controlled fire.

Save the Date: October 3, 2020, from 1 p.m. to 4 p.m.

Our Annual Fire Company Open House

I wish you all a wonderful spring and summer season.

Kevin Wasson - Fire Chief

Since 1979

CLEMENS

Septic Service

PUMP-OUTS

INSTALLATIONS

REPAIRS

Your local septic experts in
business for over 40 YEARS!
Family Owned & Operated

215-723-2122
ClemensSeptic.com

Toys for Tots 2019: More Than 5,000 Toys Distributed



The 2019 U.S. Marine Corps Toys For Tots campaign has come to an end and the only thing we can say is, "WOW"!!!!!! We are humbled by the generosity of so many people!

Because of the overwhelming generosity of so many companies and individuals in and around our community, we were able to distribute 5,155 toys to many less fortunate children. We can only imagine the joy that you helped bring to each one of them this holiday season.

2019 also brought many challenges to the campaign. Because two former Coordinators with very large campaigns in Montgomery County retired at the end of 2018, and their campaigns were shutting down, the requests from companies all over the county was overwhelming. Of course, that meant more toys coming into our location, which was wonderful.

However, we soon realized that the Montgomery-Harleysville campaign had outgrown the use of the Lower Salford Township Police Department's 2-bay garage! We were overrun with toys and no space to work. The toys could not be counted or packed fast enough before more came in, some by the truckload!

At the end of the campaign, we collected a total of 11,167 toys!

A special "Thank You" to the Red Hill Toys For Tots campaign in securing a donated storage unit to store the remaining inventory for the beginning of the 2020 campaign.

We were also notified that another Coordinator in Montgomery County retired at the end of 2019. That now leaves the majority of Montgomery County without Toys For Tots campaigns, which means 2020 will be even harder to cover. We are actively working to find local warehouse space before the 2020 campaign begins. This would allow a bigger, safer working and storage location for our campaign.

If secured, it would also allow us to have a staff of volunteers to help with sorting, counting, pulling, and packing toys. Hopefully, we can achieve this before the 2020 campaign begins on October 1. If any businesses or residents have any suggestions or would like to volunteer to help, please do not hesitate to contact us at 215-256-9500.

We are excited to see what 2020 brings!! Additionally, as always, monetary donations are greatly appreciated and can be submitted directly online at <http://harleysville-pa.toysfortots.org>.

Barbara J. Jansons, Toys For Tots Coordinator
Montgomery-Harleysville Region

Eye on Development

Preliminary and Final Plans under Review:

- JERC Partners LVII, LLC: preliminary plan for a 150,000-square-foot warehouse at 59 Fretz Road.
- Metropolitan Development Group, Inc. – preliminary plan for 48 single-family homes on Maple Avenue between Oak Drive and Harleysville Pike.
- Christopher Lane Realty/Derbyshire Marine Products, LLC – land development for a 22,000-square-foot light-industrial building on Christopher Lane.
- Clemens' Mill – land development at 531 Main Street for an office building and 13 residential units

Plans Approved for or Currently in, Construction:

- Applewood Partners, Inc./Jacob's Crossing – 42 attached residential units on Oak Drive (past Post Office) and 1 single-family home on Meadow Lane.
- Rittenhouse Property/Telvil Corporation– residential development plan for 30 single-family dwellings at 167 Harleysville Pike.
- Silver Springs Farm – 7,700-square-foot warehouse addition at 640 Meetinghouse Road.
- Espenship Subdivision/Sherman Builders – 3 single-family dwellings on Old Skippack Road.
- Chinmaya Mission Church – 18,000-square-foot Religious Use building at 991 Lucon Road.
- Wawa Convenience Store and Fueling Facility (Provco Pinegood) – Land Development (Mainland Pointe Mixed-Use Development) – Main Street
- Mainland Pointe – SHR Harleysville, LP – Mixed-Use Land development on Main Street

****For updates, please visit the Eye on Development page located in the Building & Zoning section of the Township website: www.lowersalfordtownship.org**

Family Owned since 1950

Commercial **BERGEY** Residential
Floor Coverings
Flooring • Tile • Countertops

www.bergeyflooring.com

Mailing Address: PO Box 85 • Harleysville, PA 19438
311 South Main Street • Harleysville, PA 19438
(215) 256-8846
bergeyflooring@comcast.net

**RITTENHOUSE**
PROPERTY MANAGEMENT

Specializing in
Managing and Maintaining
Rental Properties

840 Harleysville Pike, Suite 3, Harleysville, PA 19438
Phone: 215-723-8700
Rod Moyer, Broker
www.rittenhouseproperty.com

HOW CAN I PROTECT MYSELF FROM COVID-19?

PRACTICE GOOD HEALTH HABITS



WASH YOUR HANDS OFTEN



COVER COUGHS + SNEEZES



DON'T TOUCH EYES/NOSE/MOUTH



CLEAN SURFACES FREQUENTLY



STAY HOME WHEN SICK



AVOID SICK PEOPLE



pennsylvania
DEPARTMENT OF HEALTH



2020 Summer Discount Ticket Program

We have discounted tickets available to many popular summer attractions throughout the region. Stop in at the Township Building, 379 Main Street, Harleysville, Monday through Friday between 8:30 a.m. to 4:30 p.m. to get your tickets. For pricing, please visit the township website or call 215-256-8087 with any questions. Cash or check only.

Proceeds Benefit Lower Salford Township Parks!

- Adventure Aquarium
- Baltimore Aquarium
- Crayola Experience
- Diggerland USA
- Dorney Park
- Dutch Wonderland
- Franklin Institute
- Hersheypark
- Knoebels Amusement Park
- Museum of the American Revolution
- Morey's Piers
- PA Renaissance Faire
- Philadelphia Zoo
- Six Flags Great Adventure
- Splash Zone Water Park Wildwood

"NOTICE: Availability of tickets may be affected by state restrictions due to the COVID-19 Pandemic. Please refer to the Township website for up-to-date information."

County Bridges Update

The Montgomery County Department of Roads and Bridges recently provided a status report for both the Camp Wawa bridge and the Bergey's Mill bridge. Both bridges, which are owned by the county, were closed for safety reasons several years ago.

- **Camp Wawa Bridge:** The county has awarded the contract to Gannett Fleming to design, engineer, and replace the Camp Wawa Road bridge. The final design is nearing completion, with construction expected to start this year. For updates, go to <https://stories.opengov.com/montcopa/published/O1eCOOK1q>
- **Bergey's Mill Bridge:** The engineering and design of the Bergey's Mill Road bridge has also been awarded to Gannett Fleming; however, the structure of this bridge has been deemed historic, and additional steps need to be taken before any type of replacement or rehabilitation can take place.

With all historic structures in the state, the Pennsylvania Historical Museum Commission (PHMC) must weigh in with a "rehabilitation feasibility analysis." This analysis determines whether the bridge should be completely replaced by a new structure or if the existing structure should be reconstructed to historic specifications. The PHMC must provide this analysis before engineering and design can begin. The request for this analysis was submitted by the County to the PHMC in May of this year. For updates, go to <https://stories.opengov.com/montcopa/published/cgBkXaLFH>

Spotted Lanternfly Battle Heating Up for 2020



If you see a spotted lanternfly – that beautiful but invasive species native to Asia that has spread to 14 counties (including Montgomery) in Pennsylvania since 2014 – don't call the police. It's not something they can do anything about.

“Kill it. Squash it, smash it. Just get rid of it,” advises the Pennsylvania Department of Agriculture. “These are called bad bugs for a reason.”

After you've dispatched the insect, you can report its presence online or by calling 1-888-4BADFLY.

The spotted lanternfly causes serious damage in trees, including oozing sap, wilting, leaf curling and tree dieback. In addition to tree damage, when spotted lanternflies feed, they excrete a sugary substance, called honeydew, that encourages the growth of black sooty mold, which is harmless to people but causes damage to plants.

In counties infested and quarantined for the insect -- that includes Montgomery -- residents report hundreds of the insects that affect their quality of life and ability to enjoy the outdoors during the spring and summer months. Spotted Lanternflies will cover trees, swarm in the air, and their honeydew can coat decks and play equipment.

During the spring and early summer, experts advise destroying Spotted Lanternfly egg masses, which look like gray or tan, unevenly spread, smears of mortar or clay that appear on any smooth trunked tree, stone or other flat smooth surface, including vehicles, campers, yard furniture, farm equipment or any other items stored outside. Simply scrape them off, double bag them, and throw them in the garbage, or place them in alcohol or hand sanitizer.

Penn State Extension has developed additional instructions for homeowners wanting to attack their own spotted lanternfly problems. They advise the following:

- Wrap tree trunks that the insects are climbing with sticky tape, which is available online and from local garden centers. Banding is most effective against nymphs in the spring, but homeowners have had success in trapping adults as well. But sticky tape has trapped birds and small mammals as well. That can be avoided by caging the sticky tape with wire or fencing material wrapped around the tree.
- Remove tree-of-heaven (*Ailanthus altissima*), a non-native, invasive plant common in landscape plantings and disturbed areas, such as along the sides of roads. It's a preferred host plant of the spotted lanternfly.
- Attack the insects with pesticides. The extension website advises, “Only use insecticides that are registered by the Environmental Protection Agency to treat any insect on your property. All EPA-registered insecticides have an EPA registration number and a label for appropriate and legal use. Home remedies should not be used against spotted lanternfly because they may be unsafe to humans, pets and plants, and could be illegal.”

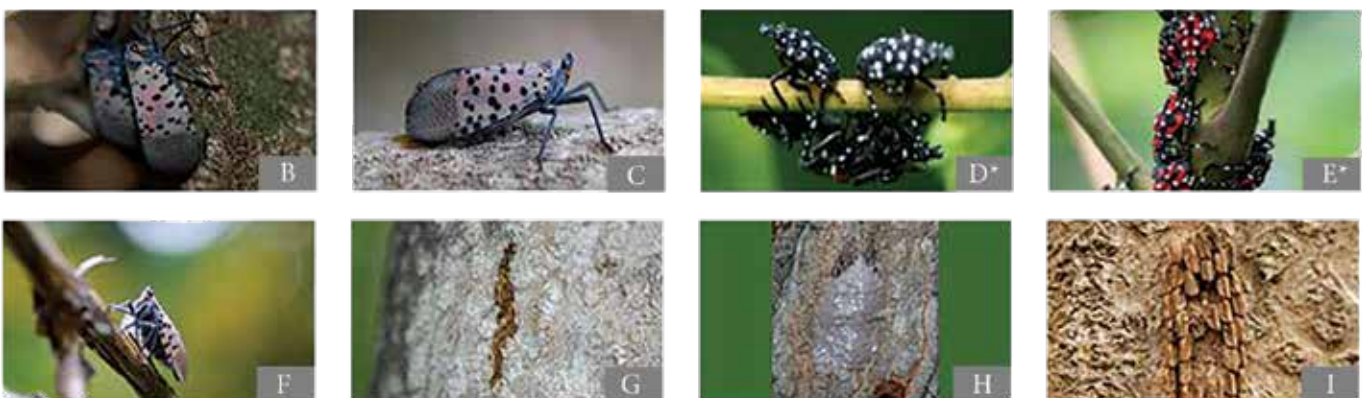
Why is it important to stop the spread of Spotted Lanternfly? Well, in addition to being an annoyance, the insect can be destructive. A Penn State study 2019 projected worse-case scenario losses of \$554 million annually and 5,000 jobs. It's already blamed for estimated economic damages of \$50.1 million per year and the loss of more than 400 jobs in the southeastern part of the state.

The Extension website holds an online course that provides businesses with the necessary training to receive a Pennsylvania Department of Agriculture permit, which is required for companies that move equipment and goods within and out of the quarantine zone.

Nearly 30,000 individuals have taken the course to date, including Penn State employees who travel to the quarantine zone on business.

“More and more people are identifying, reporting and destroying the spotted lanternfly” said Emelie Swackhamer, horticulture extension educator in Montgomery County. “Keeping the spotted lanternfly from reaching other parts of the state is crucial while we work, and every citizen can help by learning the steps they can take to help stop it.”

To learn more and report sightings, visit the Penn State Extension website or call the spotted lanternfly toll-free hotline at 888-422-3359. All reports are documented and investigated by the Pennsylvania Department of Agriculture.



**Photos courtesy of Park et al. 2009, Biological Characteristics of *Lycorma Delicatula* and the Control Effects of Some Insecticides.*

(A) Spotted Lanternfly showing the fore and hind wings (B) Resting against bark (C) Lateral view (D) Early nymphs (E) Late nymphs (F) Feeding on wild *Vitis* sp. (G) Weeping sap trail on a tree (H) Egg mass covered in waxy coating (I) Old hatched egg mass on a trunk

From the Lower Salford Township Authority

We would like to take this opportunity to provide our residential and commercial customers with guidance about items that should not be flushed down toilets or poured down drains.

Amid the bulk-buying of toilet paper and other sanitary products during the COVID-19 pandemic, the Authority has seen a rise in the non-flushable items at the wastewater treatment plants. The problem is that toilet paper substitutes and flushable wipes are not really flushable.

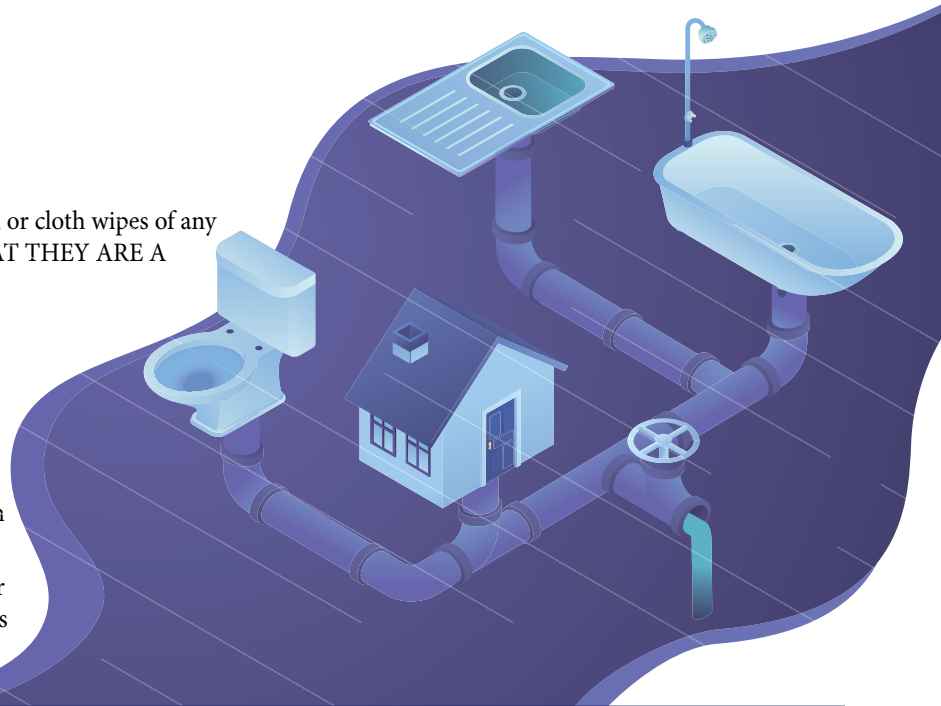
Even if the wipes claim to be “flushable,” their inability to break down in the sanitary sewer systems may cause a costly sewer backup into your home or business. These items can also cause blockages in the Authority’s sewer lines, damage pumps, screens, and filters at the wastewater treatment plants and pumping stations.

Items that should NOT be introduced into the sanitary sewer system include the following:

- Cloth rags or towels;
- Paper (other than toilet paper/tissue);
- Medications (prescription or over the counter);
- Feminine hygiene products of any kind;
- Beauty products, Q-Tips, dental floss;
- Plastics of any kind;
- Grease of any kind – especially cooking grease;
- Baby wipes, toilet wipes, towelettes, disinfecting wipes, or cloth wipes of any kind, **EVEN IF THE CONTAINER INDICATES THAT THEY ARE A “FLUSHABLE” PRODUCT;**
- Paint, varnish, paint remover;
- Garden supplies (such as pesticides, fertilizers);
- Motor oil, gasoline, or any explosive material; and
- Sump pump or stormwater discharge.

Instead, all the items mentioned above should be thrown in the trash or disposed of properly.

The Lower Salford Township Authority appreciates your cooperation and understanding of the significance of this matter.



Harleysville
ACE HARDWARE

Locally owned and serving the community
for over 40 years!

467 Main St
Harleysville, PA 19438

215-256-8893

Store Hours:
Mon-Fri: 7am-8pm
Sat: 7am-6pm
Sun: 10:30am-5pm





Supervisors Aim to Launch Communication Committee

The Board of Supervisors is working to establish a new committee to explore the most effective ways of facilitating communication between the township and its residents. This committee will also be responsible for informing the community about its upcoming meetings, township-run community events, and other department announcements.

Additionally, supervisors are in the process of implementing a distribution list to stay in touch with residents who wish to receive information by email. Keep an eye on the township website for updates. As soon as this service goes live, we will post it and you will be able to subscribe to receive these emails directly from our website at www.lowersalfordtownship.org. Of course, you may unsubscribe at any time.

If you are interested in serving on this committee, please forward a letter of interest along with a resume to Joe Czajkowski, Township Manager 379 Main St., Harleysville, PA 19438, or by email at township@lowersalfordtownship.org.

Thank you.

Meet New Supervisor Kevin Shelly

Age: 38

Education: graduated from Souderton Area High School, Class of 2001; attended Montgomery County Community College (Secondary Education - History)

Career: professional magician for more than 20 years; has performed locally and across the country (including Las Vegas) at trade shows, street festivals, weddings, and birthday parties; magic ranges from close-up tricks (especially cards) to large illusions with professionally trained assistants.

Family: Kevin and his wife Dru have been married for 12 years. They have four children ages 11, 10, 7 and 4.

Other: Kevin is active with The United Mitochondrial Disease Foundation.

Why He Ran: Kevin says he is passionate about the township's rural roots, its deep connection to Montgomery County history, its pivotal role in helping to shape the regional economy during the 20th Century. But he's equally bullish about the township's future and would like to see more people feel the same way.

"I want to get more people excited about the local community," he says.

One of the ways to accomplish that goal, he says, is with a robust communications plan that reaches all residents with timely, useful information about activities within the township. As the township grows and attracts a younger demographic, there will be interest in offering more things to do, he says.

"The more we advertise, the more we can give people reasons to stay local for entertainment," says Shelly.

Situations like the current COVID-19 crisis are also an important reason the township needs a comprehensive communications plan, he says.

"We need to have messaging in place to let people know where they can turn to if they need help," he says.

In lieu of a headshot, Kevin would rather residents see this.

**If you are in need of food,
or if you are in the position to
provide monetary support
to those in need in our
community,**

**please visit:
www.smores.com/g57tp**

**for a list of local community
resources.**

Recycle Unwanted Clothing & Electronics Right from Your Door

Powered by **retrievr**, Montgomery County is proud to bring you a convenient service that collects your unwanted clothing and electronics right from your doorstep.



Clothing



Electronics

It's easy to get started. Simply visit **retrievr.com** or text **PICKUP** to **757-70-FETCH**

1



**Tell us what
you're recycling**

2



**Pick a date
for your pickup**

3



**A truck comes
to your door**

The service is free for all clothing and small electronics.
Fees apply only for TVs and CRT monitors.

See the list of items **retrievr** collects
and FAQs at **retrievr.com/montcopa**



powered by

retrievr 



ROBOTIC-ASSISTED KNEE REPLACEMENT SURGERY



**“I’m back
in the
game!”**

— Wendy Bradshaw
Tennis Coach

HOW ROBOTIC-ASSISTED SURGERY CAN HELP YOU

Board-certified orthopaedic surgeon Paul Weidner, MD, and his colleagues at Grand View Health use the Mako® Robotic Arm-Assisted Surgery System to perform more precise surgery that may lead to less pain and quicker recovery after surgery.

Learn more about the procedure and the unique benefits for partial and full knee replacements at gvh.org/knee.



**KNEE REPLACEMENT
GRAND VIEW HOSPITAL**

GVH GRAND VIEW HEALTH

New Grand View Health Orthopaedic Center
OPENING SOON, RTE. 309 IN COLMAR

Volunteer Spotlight: John Kennedy, VP, Planning Commission



John Kennedy and his pal, Duffy. Photo by Gary Walens.

A township resident since moving from Lansdale in 2002, John Kennedy speaks with the authority of 30 years of experience in land planning. Since graduating in 1980 from the Philadelphia College of Art with a Bachelor of Science in Environmental Design, he has become established as an industry expert in land use analysis and zoning issues, working with municipal officials and other professional consultants on a variety of complex projects.

John has spent the last 20 years leading Kennedy & Associates, a land planning consulting firm that specializes in market-oriented design solutions that he says “balance the needs of the community with those of individual landowners and private investors.” Over those two decades, he has worked on projects in 24 states and two Canadian provinces.

Before starting his own firm, John was vice president as a nationally recognized planning and architecture firm based in Philadelphia.

As a member of the Planning Commission since 2010, John has helped Lower Salford meet commercial development

pressure with a measured approach, balancing the need for a strong tax base with the goal of keeping the township true to its rural character.

Now, with the COVID-19 pandemic posed to fundamentally change the way people live and work, that philosophy is paying off, he says.

“COVID-19 will impact the way land is used,” says Kennedy. “Large offices may become less important. We’re not going to have the vacant storefronts other municipalities will face.”



**OUR BEST RATES ARE
BOOKED ONLINE**

AS LOW AS \$29 PER GOLFER
ON WEEKDAY MORNINGS

VISIT US AT LEDERACHGOLFCLUB.COM

215.513.3034 | MANAGED BY **browngolf**

**NOW SERVING
PIZZA AT
LEDDY'S PUB!**

Check Out Our
Daily Specials and
New Menu!

**PURCHASE ONE
DAILY SPECIAL,
RECEIVE AN
ADDITIONAL
SPECIAL FOR
HALF OFF**

Must present ad to receive offer. Not valid with leagues, special events, holidays or any other offer. Expires 12.31.20

Our Library Continues to Enrich Lives



During the COVID-19 pandemic, Indian Valley Public Library has continued to explore, expand, and share the number of online resources we offer our patrons. As the staff continues to work behind the scenes, we continue to try to make this new adjustment to everyday life as easy as possible.

Our website, [IVPL.org](https://ivpl.org), lays out the links with explanations of each e-resource that is free to each patron with a library card. Don't have a library card? We are allowing patrons to sign up for temporary library cards that can be made permanent once we reopen. Use this link to get yours: <https://bit.ly/33DG4Jy>.

We are offering more and more virtual events through Facebook Live and Zoom. In April, not only did we celebrate National Library Week, but we also held about 30 virtual events for patrons of all ages. Some of those include virtual storytimes, an Edible Book Festival, and a Chanticleer Gardens presentation—all of which received overwhelmingly positive feedback.

The Edible Book Festival allowed contestants to create an edible rendition of their favorite book. Congratulations to our winners who recreated *20,000 Leagues Under the Sea*, *Le Petit Prince*, *The Woman in White*, and *The Very Hungry Caterpillar*.

For now, IVPL will offer all programs virtually as we continue to keep safety measures in mind for all our patrons. Summer reading for both adults and children will be moved to a virtual platform; please see our website for more information on how to participate.

Additionally, we have launched our new Foundations of Friends, which is a group that supports the library in various ways. The foundation's numbers have grown to over 60 members since we launched the group to the public. If you are interested in joining our new group, either passively or actively, please contact Jocelyn Rose at jrose@ivpl.org, as the foundation is always looking to welcome new members.

If you have any questions about what the library is offering during these times, please direct them to Jocelyn Rose, Development Officer, through email at jrose@ivpl.org.

Thank you to all of our new and existing patrons who have continued to support Indian Valley Public Library during these times. We hope that you all are and remain to stay safe and healthy.

Gianna U.

Joan L.

The winning entries in the Edible Book Festival.



Trail System Expanding

In cooperation with T.H. Properties, Lower Salford will be expanding its trail system sometime this year.

The new trail will connect from the back portion of the new T.H. Properties Lincoln Woods development in Franconia Township and extend into Lower Salford across Township Open Space near Eastwoods Drive. The trail will run parallel with Yoder Road across from Eastwoods up to Sunset Drive and will have 2 crossings; one at Eastwoods and one at Sunset.

As always, the Township and the Township Park Board are eager to connect and create additional trails to encourage our residents to get outdoors and experience the beauty of nature in Lower Salford.



This parcel of Township Open Space along Yoder Road near Eastwoods Drive will be seeing a new trail in 2020.

Don't Mow the Stream or Pond Edge

To help protect the health of our streams and ponds, don't mow right up to the edge. Leave an area with high grasses, trees and/or shrubs along the stream or pond edge. Benefits to the stream or pond include:

- Filtering water runoff entering the stream or pond;
- Allowing the roots to protect the banks from eroding;
- Shading the stream or pond to cool the water temperature for a healthier stream; and
- Allowing the vegetation to filter pollutants before the runoff enters the stream or pond.



If you have a stream or pond that goes through or is adjacent to your property, please protect the vegetation along the stream or pond, allow the grasses to grow, and plant trees and/or shrubs, if possible.

Lower Salford Township is required to reduce the amount of sediment and nutrients entering our streams by the Pennsylvania Department of Environmental Protection. For any questions or concerns regarding stormwater or to report a spill or pollution entering a stream, pond or storm sewer system, please call the Township at 215-256-8087.



Thank You To The Businesses.

This publication is made available through the generous advertising sponsorship of the businesses listed throughout our newsletter. We wish to encourage your patronage of these establishments; they play a substantial role in the economic vitality of our community.



McMAHON
TRANSPORTATION ENGINEERS & PLANNERS
Proudly serving Lower Salford Township!

A full service transportation engineering firm specializing in:

- Traffic Engineering
- Transportation Planning
- Highways
- Land Surveying
- ITS/Signals
- Data Collection
- Highway Safety
- GIS & Custom Software Development

mcmahonassociates.com
Corporate Headquarters - Fort Washington, PA: 215.283.9444



BERKSHIRE HATHAWAY
HomeServices
Fox & Roach, REALTORS®



Terry L. Derstine & Amber Williams
418 Main Street
Harleysville, PA 19438
(215) 256-6543



Derstine Team
Our roots are deep



Grilling Safety

There's nothing like outdoor grilling. It's one of the most popular ways to cook food. But, a grill placed too close to anything that can burn is a fire hazard. They can be very hot, causing burn injuries. Follow these simple tips and you will be on the way to safe grilling.

SAFETY TIPS

- » Propane and charcoal BBQ grills should only be used outdoors.
- » The grill should be placed well away from the home, deck railings and out from under eaves and overhanging branches.
- » Keep children and pets at least three feet away from the grill area.
- » Keep your grill clean by removing grease or fat buildup from the grills and in trays below the grill.
- » Never leave your grill unattended.
- » Always make sure your gas grill lid is open before lighting it.

CHARCOAL GRILLS

- » There are several ways to get the charcoal ready to use. Charcoal chimney starters allow you to start the charcoal using newspaper as a fuel.
- » If you use a starter fluid, use only charcoal starter fluid. Never add charcoal fluid or any other flammable liquids to the fire.
- » Keep charcoal fluid out of the reach of children and away from heat sources.
- » There are also electric charcoal starters, which do not use fire. Be sure to use an extension cord for outdoor use.
- » When you are finished grilling, let the coals completely cool before disposing in a metal container.



Your Source for SAFETY Information
NFPA Public Education Division • 1 Batterymarch Park, Quincy, MA 02169

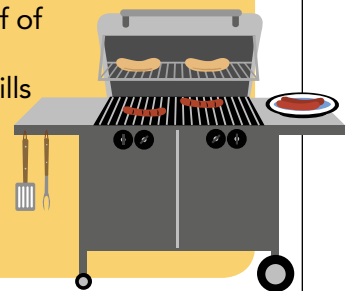
PROPANE Grills

Check the gas tank hose for leaks before using it for the first time each year. Apply a light soap and water solution to the hose. A propane leak will release bubbles. If your grill has a gas leak, by smell or the soapy bubble test, and there is no flame, turn off both the gas tank and the grill. If the leak stops, get the grill serviced by a professional before using it again. If the leak does not stop, call the fire department. **If you smell gas while cooking, immediately get away from the grill and call the fire department.** Do not move the grill.

If the flame **goes out**, turn the grill and gas off and wait at least **5 minutes** before re-lighting it.

FACTS

- ! July is the peak month for grill fires.
- ! Roughly half of the injuries involving grills are thermal burns.



The Best in Professional Roofing Since 1950

BANES ROOFING & EXTERIOR RENOVATIONS INC.

Lic. #PA113952

80 S. 3rd Street
Telford, PA

215-723-2888
www.banesroofing.net

Karen Bergman
MSPT, DPT
Physical Therapist



NovaCare
REHABILITATION
The Power of Physical Therapy™

345 Main Street, Suite 3
Harley Commons
Harleysville, PA 19438
office: 267.933.0660
fax: 215.256.1397

KaBergman@NovaCare.com
novacare.com

Auction • Conventional Listings • Buyer Representation
Business & Commercial Liquidations



SANFORD ALDERFER
REAL ESTATE
REALTORS • AUCTIONEERS

The Trusted Name in Real Estate Sales & Auctions since 1959

215-723-1171
www.AlderferRealEstate.com

2780 Shelly Road
Harleysville, PA 19438



Loving attention. Lasting care.
Three communities to explore. Call today to learn more!

Call 215-368-4438

The Willows of Living Branches
Hatfield, PA

Souderton Mennonite Homes
Souderton, PA

Dock Woods
Lansdale, PA



LIVING BRANCHES
Live & Grow - Together

www.livingbranches.org



BERGMAN
ENGINEERING

WWW.BERGMANENGINEERING.NET

215-256-4861

FORENSIC INVESTIGATIONS
CIVIL ENGINEERING
CONSULTING SERVICES
EXPERT WITNESS

Realize Greater Heating & Air Conditioning Efficiency...
AND SAVE UP TO 40%



INSTALLATION & SERVICE ON ALL MAJOR BRANDS

Financing Available

Heating & Air Conditioning

Family Owned & Operated Since 1973
Installations • Sales • Service
Maintenance Contracts




Free Estimates On New Installs

800 Hagey Rd, Souderton • Fast Emergency Service
215-799-0515 • TOLL FREE 1-800-564-3382 • www.cc-hvac.com



\$300 off

Any Heating & A.C./Heat Pump
Combined System Installed
Mention This Ad

Heating • A/C • Heat Pumps
Not good with any other offers
One coupon per job
Coupon valid only at time of sale

LBIS LLC
LUCILLE BONDI INSURANCE SOLUTIONS

FREE CONSULTATIONS
215-256-5954
Medicare Supplement Specialists

Medicare Supplement Specialists
18 Years Experience in the Senior Medicare Market
Supplements • RX Plans • Advantage Plans

439 Main Street, Rear Building | Harleysville, PA 19438
lucille@bondimedicaresolutions.com | www.bondimedicaresolutions.com

WHY WORK WITH US?

- Be Your Own Boss
- Enjoy Outside Sales Independence
- Proven Products
- Flexible Schedule
- Generous Commissions



NOW HIRING!!!

Rewarding Work That Fits Your Life!

Call for Information 215-257-1500 x106
Email your resume to gregory.cbn@gmail.com

Harleysville

SINCE 1915 **BANK**



Harleysville Branch
271 Main St
Harleysville, PA

YOUR COMMUNITY... YOUR BANK

800.243.8700 • harleysvillebank.com



Harleysville • Hatfield • Lansdale • Souderton
Summeytown • Upper Providence • West Norriton

Don't Buy A Hearing Aid... Until You Hear What We Have To Offer!



Every Tuesday and Thursday
FREE Hearing Exams
Consultations
Demonstrations

- Best Prices
- Discounts on all levels of Hearing Aids
- Free Lifetime Batteries with Every Purchase
- Free Lifetime Appointments with Every Purchase
- In-Home services Available

Our Hearing Aid Services
Hearing Evaluations • Hearing Aid Repairs • Swimmer's Plugs
Shooter's Plugs • Hearing Aid Dispensing • Custom Hearing Protection • Batteries • Hearing Aid Accessories

Harleysville Office
404 Main Street
Harleysville, PA 19438
215-646-7879
(In the Nase Dental Group Office)



Maple Glen Office
858 Welsh Road, #7
Maple Glen, PA 19002
215-646-7879
(In the Maple Glen Professional Building)

NEW Pennsburg office opening this summer!

Schedule an appointment today:
215-646-7879 • www.hearclear4u.com

EASY, SAFE AND HASSLE FREE



215.703.0200

65 Wambold Rd. • Souderton, PA 18964

www.tncselfstorage.com



Helping the community with our free drug disposal program

QUICK FAMILY FRIENDLY SERVICE

377 MAIN STREET
HARLEYSVILLE, PA 19438
215.256.4146 (PHONE)
www.RANNPHARMACY.com



We'll Help You Put It All Together



- Personal Insurance
- Financial Services
- Business Insurance
- Employee Benefits

The strengths of FIFS are their staff and personal service. They go above and beyond what other companies might do.
Cheryl - Harleysville



199 Telford Pike, Telford, PA 18969

267.384.5300 www.fifs.com



STEPHEN REDDING
Founder

www.happytreeltd.com

FULLY INSURED • REASONABLE RATES

215-257-7650

126 Reller Road • Green Lane, PA 18054

Tree Service, Landscaping, Plant Health Care

Quality work and integrity in our business dealings are the hallmarks of Happy Tree.

- **Professional arborist services** for all large trees including pruning, shaping, deadwood removal, cabling, bracing, cavity work, storm damage repair, hazard evaluation, and tree removal.
- **Complete landscaping services** from design through installation and maintenance. Design services from our own in-house Registered Landscape Architect. We grow our own trees and shrubs to ensure top quality, hardy installations.
- **Cutting-edge plant health care treatments**, including nutritional support, feeding, pest control, and treatment of disease.

“SATISFACTION THAT GROWS!”



Lower Salford Township
 379 Main Street
 Harleysville, PA 19438

PRSR STD
 U.S. POSTAGE
PAID
 PERMIT #640
 DOYLESTOWN, PA

Township Officials

Douglas A. Gifford	Chairman
Douglas M. Johnson	Vice Chairman
Keith A. Bergman	Supervisor
Christopher R. Canavan	Supervisor
Kevin Shelly	Supervisor
Joseph Czajkowski	Manager
Holly Hosterman	Assistant to the Township Manager



Spring/Summer 2020



This Community Newsletter is produced for the Lower Salford Township by
Hometown Press • 215.257.1500 • All rights reserved*

*Thanks to the generous sponsorship of our advertisers, this newsletter is produced by Hometown Press at no cost to the residents.
 Your support will be greatly appreciated. To Place An Ad Call Denise Morano • 610-346-6126 • DeniseofHTP@yahoo.com
 Content provided by JOE FERRY • 267-772-0740*



LIGHTING | POWERING | CONNECTING

Connect with us!
 @BergeysElectric



2880 Penn Street, Hatfield, PA | 215-723-5518
 BergeysElectric.com

Henning's
 www.henningsmarket.com



DELICIOUS CATERING

**HOMEMADE SALADS,
 SIDES & ENTREES**

HOMEMADE BAKERY

**FRESH MARKET
 BUFFET**

COFFEE HOUSE

PIZZERIA

**OPEN EVERY DAY
 7 AM - 11 PM**

290 MAIN STREET | HARLEYSVILLE | PA | 19438 | 215-256-9533

Heirloom Breeds
Natural Dense
Quarry Hill Farm
Market
Farm Market
Community
 Humanely Raised Protein
 Wed 12-6 Thursday - Saturday 9-3 & by appointment Open year round
 620 Quarry Road + Harleysville, PA + 19438 + 215.896.5596 + quarryhillfarm.net