

LOWER SALFORD TOWNSHIP NEWSLETTER



Spring/Summer 2019 • Published by the Board of Supervisors • Founded 1741



INSIDE THIS ISSUE

Township Contact Information.....	2
Meet Doug Jones	3
Lederach Signal Update.....	3
Volunteer Spotlight: Kent Krauss .	4
Lederach Golf Course is a Habitat for Monarch Butterflies	4
Harleysville Area EMS Update	5
Harleysville Fire Company.....	5
Fire Safety Tips from the Fire Marshal's Office	5
When You Go on Vacation: Tips for Securing Your Home	6
2019 Summer Discount Ticket Program	6
The Township's Historical Societies Annual Happenings	7
Did You Know?.....	7
From the Harleysville Community Center.....	8
"Thank You" from Our Toys for Tots Coordinator	9
In Memoriam.....	9
Eye on Development.....	9
Lower Salford Township Authority Cheswyck Gravity Sewer Line Project.....	10
Taking a Glance into the Past.....	11

Message From the Chairman

Dear Residents:

I'm beginning to lose my faith in the prognostication capability of a certain rodent in Punxsutawney. His promise of an early spring was proven to be a cruel hoax, holding us in near-breathless anticipation of the warming rays of the sun.

As I write this in early March, I am looking at the last vestiges of our deepest (and hopefully final) snow storm. Once again, our Public Works crew deserves our appreciation for its fine work in keeping the roads safe and free of snow and ice.

The winter's many small but numerous accumulations proved to be just one of the challenges facing our new Public Works Director, Doug Jones, who joins us from East Norriton Township. Doug's 20 years of experience in the field has helped provide a seamless transition and we welcome him to our Township family.

Spring's renewal this year seems to promise a bumper crop of construction for the Township. The traffic light at the Lederach five points intersection is slated to be installed this spring. We will also see the start of the new and improved Wawa at the Mainland Pointe development on the northeast side of the Quarry Road and Sunneytown Pike intersection.

Following the denial of the requested zoning change at Maple Avenue and Oak Drive by the Board of Supervisors, the developer, Metropolitan Group, the residents and the Township Planning Commission have all worked collaboratively to propose a new plan for each site that appears to be a compromise with which all parties can work. It is heartening to see what a free exchange of ideas can produce. There's still more to work through, but there is a new sense that this can be done in a beneficial manner for all.

Now that the nice spring weather has finally arrived, please take a few moments to enjoy our parks and multi-use trail system. I guarantee you will feel that sense of renewal that spring creates every year.

Douglas Gifford
Chairman, Lower Salford Board of Supervisors



See inside for details of this year's historical happenings in the township.

2019 Voting Information



This year's Primary Election is May 21; the General Election is November 5. Polls for both days are open from 7 a.m. until 8 p.m.

PLEASE NOTE: Beginning with the Primary Election, Montgomery County has implemented a NEW VOTING SYSTEM whereby a paper ballot is used. To educate yourself more on this new format, please visit the Montgomery County Voter Services webpage at: <https://www.montcopa.org/3112/New-Voting-System>

If you do not have internet access, please call Montgomery County Voter Services at: 610-278-3280. The Township encourages everyone registered to vote to come out and cast your ballot in both the Primary and General elections.

Visit our website at: www.lowersalfordtownship.org

NASE DENTAL GROUP



Dr. John B. Nase in Harleysville

Family Microdentistry & Implants

Hate Your CPAP?
Do You Snore?
There is an alternative...

The Indian Valley
Snore Stop

www.NaseDentalGroup.com

215-513-NASE



Bucks County's Finest Luxury Townhome Rentals



DOYLESTOWN • CHALFONT
PERKASIE • SELLERSVILLE

HERITAGE
Property Management

**PETS STAY
FREE!**

888.656.0344



HeritagePropertyRentals.com



A DIVISION OF PEPE-SHERMAN ASSOC. INC. DESIGN AND BUILD SINCE 1978

NABCEP Certified
Reg. PA Contractor
(PA014647)



Thinking about going solar for your electrical needs? Now is the time to take advantage of government incentives and tax credits.

Contact James Pepe for a free site evaluation.

Office (215) 256-9493

E-Mail pepesherman@yahoo.com

www.sunraysystemspa.com

Take advantage of new lower prices and government tax incentives while they last.

**Indian
Valley**

**BULK CARRIERS
INC.**

DRIVERS APPLY NOW!

215-257-5151 • www.ivbulk.com

Tylersport, PA 18971



A TRADITION OF RESPONSIBLE SERVICE!

For over 80 years, Indian Valley Bulk Carriers has been on the road, successfully satisfying customers' material transport needs throughout the Mid-Atlantic Region. Our customer focus and dedication to safety never waivers, whether we are delivering a load of decorative stone for an individual homeowner or a 1/4 million tons of sand to a concrete plant.



For over 80 years: From humble beginnings in 1938 by Raymond Long hauling produce to market, to one of the industry leaders for the Tri-State Region in the construction marketplace.



Committed to Safety: For the past 10 years we have been using EOBR and ELD to reinforce our commitment to running a safe and efficient organization. Constantly looking at the advancing technologies being developed to aid in the daily operation of all our vehicles.



Home Daily/Weekends: The Industries we work for operate primarily Monday thru Friday which also allows our drivers to enjoy Weekends for that quality home time to spend with friends and family.



Lower Salford Township Contact Information

379 Main Street • Harleysville, PA 19438 — www.lowersalfordtownship.org

Township Office: 215-256-8087 • Fax: 215-256-4869 • Office hours: Monday through Friday, 8:30 a.m. to 4:30 p.m.

General Township Email: township@lowersalfordtownship.org

Supervisors Meetings

The Board of Supervisors meets the first Wednesday of each month at 7:30 p.m.

Informal work sessions are held at 7:30 a.m. on the day before the regular meeting and the third Wednesday of each month.

At the work sessions, staff updates the Board on Township activities. No formal action takes place at these meetings.

Township Supervisors

Douglas A. Gifford – *Chairman*
Douglas Johnson – *Vice Chairman*
Keith A. Bergman
Philip P. Heilman
Christopher R. Canavan

Montgomery County Commissioners

Dr. Valerie Arkoosh, Chair
Kenneth E. Lawrence Jr., Vice Chair
Joseph C. Gale, Commissioner

Court House
Swede and Airy Streets
PO Box 311, Norristown, PA 19404

610-278-3000
www.montcopa.org

Our Senator in the Pennsylvania General Assembly

Senator Bob Mensch (24th District)
www.senatormensch.com • bmensch@pasen.gov

<i>Montgomery/Bucks County Office:</i> 56 West Fourth St., Floor 2 Red Hill, PA 18076 215-541-2388 • fax: 215-541-2387	<i>Harrisburg Office:</i> Senate Box 203024 Harrisburg, PA 17120-3024 717-787-3110 • fax: 717-787-8004
---	---

Our Representative in the PA General Assembly

Marcy Toepel (147th District)
www.reptoepel.com • mtoepel@pahousegop.com

<i>District Office:</i> 410 Main St., Suite 200 Harleysville, PA 19438 215-256-6030	<i>Harrisburg Office:</i> 116 Main Capitol, PO Box 202147 Harrisburg, PA 17120-2147 717-787-9501 • fax: 717-783-2010
--	---

Pennsylvania Governor

Governor Tom Wolf

www.governor.pa.gov • governor@pa.gov
508 Main Capital Building • Harrisburg, PA 17120
717-787-2500 • fax: 717-772-8284

Lower Salford Police Department

Emergencies: 911

379 Main Street • Harleysville, PA 19438
Office: 215-256-9500 • Fax: 215-256-1212

Police Dispatch:
215-256-9595 police@lowersalfordtownship.org

Chief of Police:
Thomas A. Medwid tmedwid@lowersalfordtownship.org

Investigations:
Sgt. Cory Moyer cmoyer@lowersalfordtownship.org

Patrol and Traffic:
Sgt. Bill O'Connell woconnell@lowersalfordtownship.org

IT Administrator:
Michael Antonucci mantonucci@lowersalfordtownship.org

Police Clerk:
Barbara Jansons bjansons@lowersalfordtownship.org

President of the United States

President Donald J. Trump

1600 Pennsylvania Avenue, NW, Washington D.C., 20500
www.whitehouse.gov

Pennsylvania Senators in the United States Congress

Senator Robert Casey
casey.senate.gov • email: linked through website

<i>Philadelphia Office:</i> 2000 Market St., Suite 610 Philadelphia, PA 19103 215-405-9660 • fax: 215-405-9669	<i>Washington, D.C. Office:</i> 393 Russell Senate Office Building, Washington DC, 20510 202-224-6324 • fax: 202-228-0604
---	--

Senator Pat Toomey
toomey.senate.gov • email: linked through website

<i>Philadelphia Office:</i> US Custom House 200 Chestnut Street, Suite 600 Philadelphia, PA 19106 215-241-1090 • fax: 215-241-1095	<i>Washington, D.C. Office:</i> 248 Russell Senate Office Building, Washington DC, 20510 202-224-4254 • fax: 202-228-0284
--	--

PA Representative in the United States Congress

Congresswoman Madeleine Dean (4th District)
dean.house.gov • email: linked through website

<i>Norristown Office:</i> 101 E. Main Street, Suite A Norristown, PA 19401 610-382-1250 • fax: 610-275-1759	<i>Washington, D.C. Office:</i> 129 Cannon HOB Washington, DC 20515 202-225-4731
--	---

EASY, SAFE AND HASSLE FREE

TNC
SELF STORAGE

215.703.0200

65 Wambold Rd. • Souderton, PA 18964

www.tncselfstorage.com



RANN PHARMACY
YOUR TRUSTED NEIGHBORHOOD PHARMACY • SINCE 1982

Helping the community
with our free
drug disposal
program

QUICK FAMILY FRIENDLY SERVICE

377 MAIN STREET
HARLEYSVILLE, PA 19438
215.256.4146 (PHONE)
www.RANNPHARMACY.com



Meet Doug Jones, Our New Public Works Director

A graduate of Widener University in 1991 with a degree in Civil Engineering, Doug has spent his entire 30-year professional career in municipal public works departments. He spent time in three Chester County townships — West Whiteland, Easttown and West Bradford — and then a 10-year stint with East Norriton Township in Montgomery County before joining Lower Salford.

Doug oversees a staff of ten workers who are responsible for maintaining the township's roads (including snow removal), stormwater system, and extensive parks and open space. The biggest challenge, he says, is keeping the 80-miles of township-owned roads in good condition within the constraints of his annual budget.

“We’re looking at new and different ways to manage our resources and still have an effective road program that meet the needs of everybody,” he says.

One of the ways he intends to do that is by bringing more projects in house rather than hiring outside contractors. For example, his workers will tackle more handicapped ramp replacements that can cost up to \$7,500 each when done by a contractor.

This spring, the department will focus on “sprucing up the parks” in the already gorgeous system to get them ready for the folks who will enjoy the various amenities that are available.

Doug says he loves the unpredictability of his job. He also enjoys the opportunity to solve problems for residents.

“You never know what you are going to get into,” he says. “There are constant curve balls thrown at you. Circumstances are always changing.”

“I also get to help people,” he adds. If someone calls with a problem and we can help, I go home with a smile that day knowing I accomplished something. That’s what keeps you coming back.”



Doug Jones joined the township as Director of Public Works in December 2018.

Lederach Signal Update

With spring comes roadway and intersection construction projects. By now you may have noticed the signal construction underway at the Lederach intersection (Route 113, Salfordville Road, Old Skippack Road, Cross Road and Morris Road) associated with the PennDOT PA 63 Bridge Project.

The project schedule includes the implementation of the detour after Memorial Day 2019. As a result, PennDOT is installing a temporary signal that will be in place prior to the detour. PennDOT anticipates the permanent traffic signal, including black painted mast arms, to be operational this summer.

Periodic updates will be provided on the Township website throughout the construction. Keep in mind that short-term interruptions lead to long-term progress.



TRANSPORTATION ENGINEERS & PLANNERS
Proudly serving Lower Salford Township!

A full service transportation engineering firm specializing in:

- Traffic Engineering
- Transportation Planning
- Highways
- Land Surveying
- ITS/Signals
- Data Collection
- Highway Safety
- GIS & Custom Software Development

mcmahonassociates.com

Corporate Headquarters - Fort Washington, PA: 215.283.9444



PA 05067
215-256-4497
DreamsUnlimitedBuilders.com
1golfer@comcast.net
PO Box 416 • Harleysville, PA 19438



Building New Traditions, One Dream at a Time.



EMPLOYEE-OWNED

LANDES

WE RECOMMEND. YOU DECIDE.™

PLUMBING • HEATING & COOLING • FUEL OIL

Now Hiring!
Join a
Leading
Employer



itlandes.com | 215.256.4221

PA023382



Roth Park is one of the township's oldest parks. The pond is stocked with trout in the spring.

Volunteer Spotlight: Kent Krauss

When the opportunity to join the Park Board presented itself in 2002, Kent Krauss felt like he had no choice but to accept.

You see, Kent's father, Wayne Dennis Krauss, was a leading force in the early days of the township's park system development. As a member of the Board of Supervisors in the 1970s, Wayne identified key pieces of open space worthy of preservation and met with the property owners — mostly farmers — to work out acquisition deals that made everyone happy.

Today, thanks to Wayne's leadership along with other supervisors, the township has an extensive system that includes 12 parks spanning nearly 2,000 acres and 7 miles of walking/biking trails, both of which serve as a model for other municipalities around the county and state.

"I think there must be a genetic connection," Kent says with a smile. "I was excited to give back to a community that I grew up in!"

Now, having served on the board for 17 years, Kent says he has

thoroughly enjoyed his service to the township.

"I can't imagine what it would be like not to be on the Park Board," he says. "It's a great feeling to help protect, improve and continue to grow the great park system we have."

With the large open spaces already protected, Kent says the Park Board's two main challenges are to maintain the parks and fill in gaps so the expansive trail system continues to connect as many areas of the township as possible.

"We have to meet the needs of a growing community," he says. "Everyone has their own wishes. We have to figure out the priorities."

Kent says he is especially pleased that the Park Avenue football fields will be ready this year, allowing the Harleysville Eagles to move back home from Mainland.

"I'm glad they're coming home," he says.

A building materials sales rep, Kent currently serves as chairman of the Park Board. He has also been serving as Treasurer for the Harleysville Community Center since 2003.

In addition to following in his dad's footsteps, Kent sees his volunteer work as a way of paying back the community for the tremendous opportunities he had while growing up in the township.

"I got to experience a lot of great things," he says, "the parks, the ballfields, the pool. It's important to me that we sustain such a great system for future generations."

Lederach Golf Course is a Habitat for Monarch Butterflies

This may look like an ordinary clump of weeds that you just can't wait to mow down and get out of your yard.

But take a closer look. There is milkweed in that un-touched area. Look even closer and you will see a Monarch butterfly or two; and even closer you can see the eggs of the Monarch.

These "clumps of weeds" are anything but that. They are nature's Monarch butterfly breeding grounds and removing them takes away their habitat, which decreases the number of Monarchs in this world.

These particular milkweeds are growing wild in the open spaces at the Lederach Golf Club. Many might not realize, but the golf course is more than just a place to play a round or two. The Lederach Golf Club is a member of Audubon International. Spearheaded by Stuart Hartman, superintendent at the course, the course is a member of the Audubon Cooperative Sanctuary Program (ACSP) and has won Achievement Awards for Wildlife and Habitat Management, Outreach and Education and Environmental Planning to name just a few.

Mr. Hartman's latest project to remain certified in the ACSP is to encourage the growth of milkweed to hopefully increase the Monarch Butterfly population. On a visit to the course last summer, Mr. Hartman pointed out the many areas where milkweed is growing naturally. In these areas, he has worked with the Township Public Works Department to make sure that the areas are left untouched by any mower. And the results are encouraging, as many have been seen on the course and some are laying eggs on the underside of the milkweed.

Mr. Hartman plans to harvest some of the milkweed pods this coming fall, dry the seeds and distribute more in the areas where the milkweed currently grows and hopefully, propagate additional areas where conditions are right for the milkweed to flourish. He is hoping to get volunteers to help with this process. If you are interested in volunteering, you can contact Holly Hosterman at the Township Office at: 215-256-8087 and she will get you in touch with Mr. Hartman.

If you would like more information on the Monarchs and their migration habits or more information on Audubon International, please visit their website at: www.auduboninternational.org





Harleysville Area
Emergency Medical
Service, Inc.



Serving Lower Salford Township and
Surrounding Communities Since 2004

Harleysville Area EMS Update

Summer Safety Tip

So that you may enjoy a safe and enjoyable spring and summer season, please always remember to wear a helmet when you ride a bike or skateboard.

First-Aid & CPR Training:

Harleysville Area EMS continues to provide residents, local businesses and organizations First-Aid and CPR classes, as well as other exciting and educational opportunities.

For more information, or to schedule a training class, please contact us at CPR@HAEMS.org.



There are many exciting things occurring at the fire company, which we look forward to sharing with our residents.

We are still growing our social media presence, so please give us a "follow" on Facebook, Instagram and Twitter. It is a great way to keep up to date with fire company news and events.

Our 2018 Fund Drive mailer was a huge success. We thank all our residents and businesses for contributing. This fund drive serves as a major portion of our annual funding for the fire company, allowing us to save toward capital projects.

The scheduled replacement and maintenance of our apparatus is one of the most important things we do to maintain a safe and effective operation and the costs of this are rising dramatically. Please look for our 2019 mailer in September.

The fire company has acquired a 2019 Kenworth/Pierce Tanker Truck, which we expect to take delivery of later this year. This truck is a critical part of our response to areas where there are little to no hydrants (almost 1/3 of the township). It will carry 3,000 gallons of water, two firefighters and all the equipment needed for rural water-supply operations.

Over the past year, we have welcomed 10 new volunteers! Volunteers are still needed in many capacities. Please consider donating your time in such a rewarding way. Please stop by on a Tuesday night after 7 p.m. to speak with a member to learn more or contact the station.

As a reminder, once we begin to clean our yards from winter's leaves and twigs, open burning of yard waste is strictly prohibited by township ordinance. Please see the township website for more information. If you are not sure, please contact us or the Fire Marshal and ask before having any type of controlled fire.

I wish you all a wonderful spring and summer season.

Kevin Wasson - Fire Chief

****Save the Date: Our annual Fire Company Open House will be Saturday, October 5 from 1 p.m. to 4 p.m.***

Fire Safety Tips from the Lower Salford Township Fire Marshal's Office

Burning Regulations Reminder: As we come into spring and the weather begins to warm up, a friendly reminder that burning of yard waste, leaves, rubbish, and trash is prohibited in Lower Salford Township.

A small fire for recreational and ceremonial purposes, which are identified as fires for the purpose of activities such as roasting marshmallows, hotdogs, or worship, is allowed. All recreational and ceremonial type fires must be contained in an outdoor fireplace, barbecue grill, burn pit, chiminea or fire ring. They must be located at least 15 feet from any residence, shed, deck or combustible material. An extinguishing agent such as a fire extinguisher, bucket of water or garden hose must be easily accessible nearby.

Smoke and Carbon Monoxide Detectors: Have you changed the batteries in your smoke detectors and carbon monoxide detectors recently? Every spring and fall when we change our clocks for Daylight Savings, you should replace the batteries in you smoke and carbon dioxide detectors. It is also a good idea to replace any detectors that are over 10 years old.

When You Go on Vacation: Tips for Securing Your Home

Summer is a time when many residents will be leaving home for extended periods of time. A vacant home is an attractive target for thieves. Here are a few steps you can take to secure your home:

Make doors crime resistant

- Install deadbolt locks, solid doors and sturdy hinges and strike plates. (Be sure all materials meet building and fire codes.)

Secure sliding doors

- Install locks to prevent sliding or lifting.
- Drill a hole through the inside frame, and insert a nail to prevent sliding.
- Place a strong piece of wood in the track.

Prevent window entry

- Use window key locks. Keep keys in locks for quick exit in case of emergency or fire.
- For double-hung windows, drill holes downward where inside and outside sashes meet. Insert nails or bolts.
- Consider grates for basement and first floor windows. (Check local fire codes first.)

Crime-proof outside areas

- Keep yard, porch and entrances well lit. Look into motion detection lighting.
- Store tools, toys, etc., after use.
- Never hide keys outside your home.
- Keep bushes trimmed near doors and windows.

Safeguard valuables

- Engrave TVs and other household valuables with some identifiable number or label.
- Rent a safe-deposit box for small valuables.

Have peace of mind when you're away. Inform a trusted neighbor of travel plans. Have him or her collect mail and other deliveries. Don't share your plans with strangers.

Leave shades in their normal positions.

Have police conduct security checks on your home while you are on vacation.

If you are interested in vacation security checks, please contact the Police Department at 215-256-9500.



2019 Summer Discount Ticket Program

We have discounted tickets available to many popular summer attractions throughout the region. Stop in at the Township Building, 379 Main Street, Harleysville, Monday through Friday between 8:30 a.m. to 4:30 p.m. to get your tickets. For pricing, please visit the township website or call 215-256-8087 with any questions. Cash or check only.

Proceeds Benefit Lower Salford Township Parks!

- Adventure Aquarium
- Baltimore Aquarium
- Crayola Experience
- Diggerland USA
- Dorney Park
- Dutch Wonderland
- Franklin Institute
- Hersheypark
- Knoebels Amusement Park
- Museum of the American Revolution
- Morey's Piers
- PA Renaissance Faire
- Philadelphia Zoo
- Six Flags Great Adventure
- Splash Zone Water Park Wildwood

your life
easier, safer & more fun

Peter Becker Community
Embracing life's treasured moments.

215.256.9501 • PeterBeckerCommunity.com

Auction • Conventional Listings • Buyer Representation
Business & Commercial Liquidations

SANFORD ALDERFER REAL ESTATE
REALTORS • AUCTIONEERS

The Trusted Name in Real Estate Sales & Auctions since 1959

215-723-1171 2780 Shelly Road
www.AlderferRealEstate.com Harleysville, PA 19438

GET ACTIVE!
FREE 1-Week Membership
New Members Only.
Must be 18.
FINANCIAL ASSISTANCE AVAILABLE

NORTH PENN YMCA
NorthPennYMCA.org

Karen Bergman
MSPT, DPT
Physical Therapist

NovaCare
REHABILITATION
The Power of Physical Therapy™

345 Main Street, Suite 3
Harley Commons
Harleysville, PA 19438
office: 267.933.0660
fax: 215.256.1397

KaBergman@NovaCare.com
novacare.com

The Township's Historical Societies Annual Happenings

Tuesdays in the Garden – If you like getting your hands dirty while creating one of the most beautiful gardens in the township, join us on Tuesday nights, beginning around 6:30-ish to plant, grow and harvest vegetables and herbs. This is a great family time, and all hands - large and small - are welcome.

Plant Exchange • June 1, from 10 a.m. to 2 p.m. at Bergey Mill Farmstead
If certain plants are taking over your gardens, consider sharing them with fellow gardeners at the second annual Plant Exchange. Last year, we had daffodil bulbs, black-eyed susans and Shasta daisies and canna, among many other interesting selections.

Ice Cream Social • July 21, from 6 p.m. to 8 p.m. at Jacob Reiff Farm • Cost: \$4 per person
Join your history friends on the porch of the beautiful Jacob Reiff Farm for ice cream, to share stories of local history and to view the historic treasures housed there.

Hecklerfest • August 17, from 10 a.m. to 3 p.m. at Heckler Plains Farm
Since 1975, Hecklerfest has brought neighbors together to learn and have fun. Vintage baseball, an early tavern, homemade pies fresh from the outdoor bake oven, craft vendors, colonial games, food, hands-on craft stations, a scavenger hunt...what better way to spend a Saturday in the summer!

Carol Night • December 6 or 13 at 7 p.m. at Heckler Plains Farm*
Come join us for caroling around the bonfire. When the caroling ends, guests are invited into the candle-lit farmhouse for hot cider, hot chocolate and homemade treats. Admission to the event is a homemade treat for the groaning board. In true Heckler Plains tradition, we will relate stories of Christmas long ago with tales of the Belsnickel, the visit of Kris Kinde and how the animals can talk on Christmas Eve. *Check the website for exact date closer to December.

If you have any questions or want to be part of any of these community events, please call Joan DiMaria at 215-822-7422 (evenings).



Take a step back in time and attend this year's HecklerFest, which showcases life in the early 19th Century.

Did You Know?

In Lower Salford Township, there are:

- More than 600 acres of private land in the Agricultural Security Area program;
- More than 325 acres of permanently preserved private farms;
- More than 1,100 acres of open space owned and maintained by the Township;
- 300 acres of Township-owned open space farmed by local farmers.



Indian Valley

BIKE WORKS

SINCE 1988

Sales and Repair

215-513-7550

www.guaranteedfun.com

500 Main St • Harleysville, PA 19438

IVBikeworks

indianvalleybikeworks

SERVICE DEPARTMENT

AMERICA'S BEST BIKE SHOPS
2018

Bianchi

KONA BICYCLES

TREK

Loving attention. Lasting care.

Three communities to explore. Call today to learn more!

Call 215-368-4438

The Willows of Living Branches
Hatfield, PA

Souderton Mennonite Homes
Souderton, PA

Dock Woods
Lansdale, PA

LIVING BRANCHES

Live & Grow - Together

www.livingbranches.org

The MULCH BARN

10 Schoolhouse Road
Souderton, PA 18964
215.256.8870
www.mulchbarnsupply.com
sales@mulchbarnsupply.com

STONECRAFT

Techo-Bloc

ELDORADO STONE

ambbridge

Premium Landscape Products

Welcome to the 2019 Swimming Season: Pools open Saturday, June 1

In celebration of HCC's 60th Anniversary in 2017, the Upper Pool received a total makeover. Actually, we built a totally new pool within the old pool!

Last year, it was the Lower Pool's turn for a major renovation. The depth of the competition/lap pool was increased at the starting block end for safety purposes. A stainless overflow gutter replaced the old pool's skimmers.

With both pools' renovations behind us...NOW is the perfect time to make your plans for swimming at the Harleysville Community Center pools.

Membership information is ready to go for this summer. For membership information please visit www.harleysvillecommunitycenter.com.

For a limited time, member registration will be available online. On the HCC homepage, look for the "Click Here to Register Now" button. If you do not have internet access, mail in applications can be picked up at the Lower Salford Township Office.

The McCoy Family will be back as our snack stand vendor. The Cool Eats Snack Bar offers full lunch and dinner menus, as well as snacks of all kinds. They will be accepting credit cards, selling gift certificates and providing party packages to members who would like to celebrate their child's birthday at the pool.

The Cool Eats Snack Bar staff has two Family Fun Days planned for the Harleysville Pool this summer: Sunday, June 30 and Sunday, August 4. On both dates the snack bar staff will host a pool party as a way for them to give back to HCC patrons. From 2 p.m. to 5 p.m. there will be a DJ playing music and games for all the kids - lots of prizes to be won. There will also be a giant inflatable water slide at the pool - it promises to be a fun time for all the family.

From its inception, 62 years ago, HCC has relied on community donations, pool memberships and facility-use fees to finance its projects and required maintenance of facilities. We appreciate all the community support and continued membership to help keep the Harleysville Community Center an important place for family and friends to gather and share memories.

A special "Thank You" goes out to our community partners - Lower Salford Township, Excel Communications, Harleysville Bank, Harleysville Jaycees, Harleysville Lions, and Harleysville Rotary for their ongoing support of HCC.

To learn more of the Center's interesting history visit www.harleysvillecommunitycenter.com and look for the "About HCC" button.



Since 1979

CLEMENS

Septic Service

PUMP-OUTS
INSTALLATIONS
REPAIRS

Your local septic experts in business for over 38 YEARS!
Family Owned & Operated

215-723-2122
ClemensSeptic.com



“Thank You” from Our Toys for Tots Coordinator

As the Coordinator for the Montgomery-Harleysville Region (PAHARLY) Toys For Tots Campaign, I would like to personally thank everyone who helped make our 2018 Campaign a huge success!!! This includes all the local businesses that served as drop-off locations and/or conducted employee donations, individuals who collected toys at private holiday parties, all our wonderful friends who donated individually to the campaign and my awesome volunteers.

Through all your generous donations, we were able to ensure that 1,978 less fortunate children had gifts to open on Christmas morning. We could not have accomplished this without each and every one of you!



Barbara J. Jansons
Toys For Tots Coordinator-
PAHRL
379 Main Street
Harleysville, PA 19438

In Memoriam

The next time you stop by the Township Office, look to your right before coming in. The weeping cherry tree you will see was planted in honor of Lower Salford's first Township Manager, Loretta Romanowski, who passed away recently.



Loretta began her career with the Township in 1968 and was appointed the first Township Manager in 1978. She proudly served the Board of Supervisors and the township citizens until her retirement in 1998.

Many of our long-time residents may remember calling Loretta “Mom” as she was always there to help a resident with their concerns. Loretta passed away on Sunday, March 24, 2019 at the age of 90.

We will miss you, Loretta. Thank you for all your years of service.

Eye on Development

Sketch Plans:

- Metropolitan Development Group, Inc. – 48 single-family houses on Maple Avenue between Oak Drive and Harleysville Pike
- Metropolitan Development Group, Inc. – 64 twins houses at Oak Drive and Harleysville Pike
- JERC Partners LVII, LLC – 150,000-square-foot warehouse at 59 Fretz Road

Preliminary and Final Plans under Review:

- Christopher Lane Realty/Derbyshire Marine Products, LLC – land development for a 22,000-square-foot light industrial building on Christopher Lane
- Clemens' Mill – land development at 531 Main Street for office building and 13 residential units

Plans Approved or Currently in Construction:

- Applewood Partners, Inc./Jacob's Crossing – 42 attached residential units on Oak Drive (past Post Office) and 1 single-family home on Meadow Lane
- Rittenhouse Property/Telvil Corporation – 30 single-family houses at 167 Harleysville Pike
- Silver Springs Farm – 7,700-square-foot warehouse addition at 640 Meetinghouse Road
- Indian Valley Faith Fellowship – 14,132-square-foot addition at 190 Maple Avenue
- Espenship Subdivision/Sherman Builders – 3 single-family houses on Old Skippack Road
- Chinmaya Mission Church – 18,000-square-foot Religious Use Building at 991 Lucon Road
- Wawa Convenience Store and Fueling Facility (Provco Pinegood) – Land Development (Mainland Pointe Mixed Use Development) – Main Street
- Mainland Pointe – SHR Harleysville, LP – Mixed-Use Land development on Main Street

****For updates, please visit the Eye on Development page located in the Building & Zoning section of the Township website: www.lowersalfordtownship.org**

Family Owned since 1950

Commercial **A.W. BERGEY** Residential
& Sons, Inc.
Floor Coverings

Flooring ♦ Tile ♦ Countertops

www.bergeyflooring.com

Mailing Address: PO Box 85 ♦ Harleysville, PA 19438
311 South Main Street ♦ Harleysville, PA 19438
(215) 256-8846
bergeyflooring@comcast.net

KJ DOORS

Garage Doors & Openers • Broken Springs Replaced

215.723.5800

751 Harleysville Pike • Telford, PA 18969 PA022703

NOW HIRING Great Opportunity & Benefits!
Residential Technician/Installer

Lower Salford Township Authority Cheswyck Gravity Sewer Line Project

In evaluating the Authority's sewage system, it was determined that the Cheswyck pump station (at the end of Cambridge Circle, which services the Cheswyck residential subdivision off of Route 113) could be eliminated by constructing a new gravity line from the existing pump station site and connecting into a new manhole in the Salford Pond development. From that point, the sewage will be conveyed through the Authority's existing conveyance system to the Mainland Wastewater Treatment plant.

When the Cheswyck subdivision was built in 1983, the developer had to install a pump station to deliver sewage to the Harleysville Wastewater Treatment plant, as it was the only option available. As the Authority's system grew over the years, there were potential system revisions that became feasible. The elimination of the Cheswyck pump station is one such project.

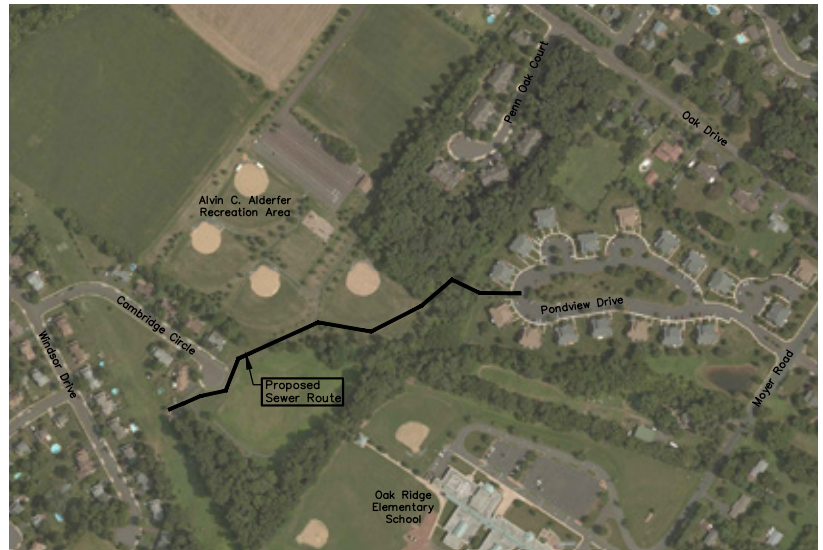
By replacing the pump station with a gravity flow line, the Authority reduces the operational cost of running the pump and the on-going maintenance of the mechanical and control systems that are required in a pump station. In addition, the flow will now be delivered to the larger and more efficient Mainland Wastewater Treatment plant.

The Authority was able to secure funds from the Pennsylvania Small Water and Sewer Grant Program through the support of Senator Bob Mensch and Representative Marcy Toepel. The project will be financed in part by a grant from the Commonwealth of Pennsylvania through the Commonwealth Financing Authority.

The project will include the installation of approximately 1,400 linear feet of gravity sewer line from a manhole on the pump station property to a manhole in Pondview Drive and the removal of the pump station equipment currently on the property. Upon completion of the project, the Authority will convey the pump station parcel to Lower Salford Township to extend the adjacent park area. The neighboring bike path will closed during construction.

The project design and construction schedule were coordinated with Lower Salford Township. The contract calls for the construction to begin after the close of the school year in June 2019 and construction is to be completed prior to the start of the new school year in August 2019. The contractor is Anrich, Inc. from Wayne, Pennsylvania. The Authority's engineer, Gilmore & Associates, Inc. will be on site to oversee the project.

Updates regarding the construction schedule can be found by accessing the Sewer Authority's page on Lower Salford Township's website at www.lowersalfordtownship.org or by contacting the Authority at 215-256-8676.



Taking a Glance into the Past

By Dave Hudnut

I used to say that what we do as the work of the Lower Salford Historical Society is to try to preserve the cultural heritage of this township and the immediate region. And what does “cultural heritage” mean?

When we use the word “culture” in everyday conversation, we’re usually talking about “high” culture: works of art and music, the lifestyle of the well-to-do, etc.

In this case, we’re using the term in the way an anthropologist would: it’s everything that people in a certain defined area (from village to city to region) do in carrying out their everyday lives, from food-gathering and raising families to education, worship, work, industry, and all the rest. The anthropologist looks at the culture of a given group of people as they are at the time of his study, whereas the present-day historian with this cultural approach goes back in time to see how they got that way.

The genealogist/family historian (as I’m sure you know) is a specialist who takes as his subject a given family and goes back as far as he can. The only problem is, once you start “doing” genealogy you find that you can’t stop. There’s always more: I’ve gone back 10 generations in tracing my own ancestors, and in the tenth, you’re back to the late 1600s and there are 512 individuals in that time-level who are related to you. When I finally tired of looking into my ancestry I had a total of just 51 names in my Ahnentafel (genealogical tree or table, the summary sheet that lists just the names, birth and death dates, and place of birth and death of your ancestors) spread over the 10 generations I researched. It took me more than 10 years just to get that far.

When we’re talking about the 10th generation back, where you have those 512 ancestors, I know the names of just 5 people: Henry Mershon I (French), Hans Jacob Wipf and his wife Susanna (Swiss), and Hans Uhlrich Toggenberger and his wife Barbara (Swiss), and I only “know” these folks because the Mershon family (my paternal grandmother’s line) has been fanatical about family history through the years and because (on my mother’s side) the Swiss have always been equally fanatical about keeping track of families, canton by canton, and I have my grandfather’s notebooks and letters.

In a future edition of these brief explorations of the history of Lower Salford Township, I plan to discuss the Lederach (Swiss) end of the township and expand on the curious fact that my Swiss ancestor (Herman Wipf) came from the same place, but in modern times at the end of the 19th Century, and thus is not considered part of the Pennsylvania Dutch culture (although the Lederach family is). But for now I want to touch on another hardy band of early immigrants, the Schwenkfelders, from Silesia, who settled in the east corner of the township in the early 1700s.

Local people know the Schwenkfelders mainly in connection with Worcester Township, where their large consolidated church stands out on Valley Forge Road, just northeast of Center Point. But 29 of their earliest settlers are buried in a small private graveyard off Fretz Road in the space between the Skippack Creek and Wambold Road at the upper end of the late Sam Kriebel’s farm in the east corner of Lower Salford Township (not accessible to the public).

The photos with this article show the monument with the names of the pioneering immigrants (arriving 1731-1737) and one of the

gravestones at the site. The single stone is David Hubner’s. My laptop can’t produce the two-dot umlaut over the u in his name, but students of German will know that it’s the umlaut that changes the sound of the letter u to “ee” as in Heebner, the way all the Heebners in Worcester spell and pronounce it.



Ernest Heebner, for instance, was the principal of the Worcester School, which I attended in the 1940s along with numerous Kriebels and members of other families lumped together under the general heading “Pennsylvania Dutch.” (The “Dutch” part of the name is a corruption of the term “Deutsch,” meaning “German” and not referring to the Dutch from Holland.)

In any event, one small flock of Schwenkfelders came to America in the period 1731-1737 and occupied the whole eastern corner of the township (the part that in the present is more or less cut off by the Northeast Extension of the PA Turnpike). Their names are on historian Joel Alderfer’s map and list of “Plantations,” and they are also discussed in James Y. Heckler’s monumental History of Harleysville and Lower Salford Township, which you may have a copy of.

I won’t get into their personal histories, and you can read all of their names on my photo of the memorial stone, but here are the names of the principal landowners in that first group to arrive in our township, with the acreages and dates of acquisition of the plots, copied from Joel’s map:

- 9 Caspar and George Heydrick, part of 106 acres in Franconia and Lower Salford townships, 1735
- 10 Christopher Kriebel, 150 acres, 1735
- 11 George Yeakel, 170 acres, 1739
- 12 George Kriebel, 37 acres, 1743
- 13 George Hoffman, 25 acres, 1743
- 14 Balthaser Hoffman, 84 acres, ca 1745, later owned by son Christopher, Schwenkfelder minister, hymnologist, teacher, and bookbinder.
- 22 George and Balthaser Hoffman, 77 acres, 1735

I think we’ve gone about as far as we can for one session, so we’ll let it go for now and continue in a few months. Contact me at hudnutdavid@gmail.com if you have questions or comments.



ROBOTIC-ASSISTED KNEE REPLACEMENT SURGERY

**“I didn’t
skip a beat!”**

A catering company owner, Marjorie Monahan of Allentown spent her career on her feet. Then knee pain began to slow her down. She chose to have robotic-assisted knee replacement surgery at Grand View Health. She was back on her feet cooking for clients again in a matter of days.

HOW ROBOTIC-ASSISTED SURGERY CAN HELP YOU

Board-certified orthopaedic surgeon Paul Weidner, MD and his colleagues at Grand View Health use the Mako® Robotic Arm-Assisted Surgery System to perform more precise surgery that may lead to less pain and quicker recovery after surgery. Learn more about the procedure and the benefits from Dr. Weidner and Marjorie at gvh.org/orthopaedics.

TALK TO THE EXPERTS

Call **Upper Bucks Orthopaedics at Grand View Health** at **215-257-3700** or visit gvh.org/upper-bucks-orthopaedics.



GVH GRAND VIEW HEALTH

LEDERACH
GOLF CLUB

OUR BEST RATES ARE
BOOKED ONLINE

AS LOW AS \$29 PER GOLFER
ON WEEKDAY MORNINGS

VISIT US AT LEDERACHGOLFCLUB.COM

215.513.3034 | MANAGED BY **browngolf**

NOW SERVING
PIZZA AT
LEDDY'S PUB!

Check Out Our
Daily Specials and
New Menu!

PURCHASE ONE
DAILY SPECIAL,
RECEIVE AN
ADDITIONAL
SPECIAL FOR
HALF OFF

Must present ad to receive offer. Not valid with leagues, special events, holidays or any other offer. Expires 9.30.19



 Care & Share
THRIFT SHOPPES

ONE PURCHASE CAN MAKE A
BIG DIFFERENCE

Spend the day with us Shop: M-W, 9-6; Th-F, 9-8; Sat. 9-6
Souderton Center • 783 Rt. 113, Souderton PA

careandshareshoppes.org • 215-723-0315



**BERGMAN
ENGINEERING**

WWW.BERGMANENGINEERING.NET

215-256-4861

FORENSIC INVESTIGATIONS
CIVIL ENGINEERING
CONSULTING SERVICES
EXPERT WITNESS

STARTING AT \$2,800

THE Birches
Harleysville, PA

PERSONAL CARE & MEMORY CARE



Proudly serving our community with award-winning care for 10 years!

691 Main Street • Harleysville, PA 19438
www.TheBirchesAtHarleysville.com • 215-541-3700



**ADVERTISING SALES
OPPORTUNITY**

*Rewarding Work
That Fits Your Life!*



- Proven Products
- Flexible Schedule
- Generous Commissions

Be Your Own Boss. Enjoy Outside Sales Independence.

Call for Information
215-257-1500 x106



Email your resume to gregory.cbn@gmail.com

Harleysville

SINCE 1915 **BANK**



Harleysville Branch
271 Main St
Harleysville, PA

YOUR COMMUNITY... YOUR BANK

800.243.8700 • harleysvillebank.com

Harleysville • Hatfield • Lansdale • Souderton
Sumneytown • Upper Providence • West Norriton **Member FDIC**



Don't Buy A Hearing Aid... Until You Hear What We Have To Offer!



Every Tuesday and Thursday
FREE Hearing Exams
Consultations
Demonstrations

- Best Prices
- Discounts on all levels of Hearing Aids
- Free Lifetime Batteries with Every Purchase
- Free Lifetime Appointments with Every Purchase
- In-Home services Available

Our Hearing Aid Services
Hearing Evaluations • Hearing Aid Repairs • Swimmer's Plugs Shooter's Plugs • Hearing Aid Dispensing • Custom Hearing Protection • Batteries • Hearing Aid Accessories

Harleysville Office
404 Main Street
Harleysville, PA 19438
215-646-7879
(In the Nase Dental Group Office)



Maple Glen Office
858 Welsh Road, #7
Maple Glen, PA 19002
215-646-7879
(In the Maple Glen Professional Building)

Schedule an appointment today:
215-646-7879 • www.hearclear4u.com



PEPE-SHERMAN ASSOC. INC.

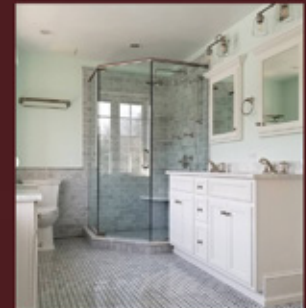
DESIGN & BUILD
SINCE 1978

www.pepesherman.com
pepesherman@yahoo.com
215-850-9803

A design and build company established in 1978 and founded on the premise that smaller can be better!

New construction homes coming soon in Lederach, PA

Reg. PA Contractor
PA014647



We'll Help You Put It All Together

fifs ^{25TH ANNIVERSARY}
Franconia Insurance & Financial Services
Smart Choices for a Secure Future

KEYSTONE

- Personal Insurance
- Financial Services
- Business Insurance
- Employee Benefits

The strengths of FIFS are their staff and personal service. They go above and beyond what other companies might do.
Cheryl - Harleysville



199 Telford Pike, Telford, PA 18969

267.384.5300 www.fifs.com

happy tree



STEPHEN REDDING
Arborist

www.happytreeltd.com

FULLY INSURED • REASONABLE RATES

215-257-7650

126 Reller Road • Green Lane, PA 18054

Tree Service, Landscaping, Plant Health Care

Quality work and integrity in our business dealings are the hallmarks of Happy Tree.

- Professional arborist services for all large trees including pruning, shaping, deadwood removal, cabling, bracing, cavity work, storm damage repair, hazard evaluation, and tree removal.
- Complete landscaping services from design through installation and maintenance. Design services from our own in-house Registered Landscape Architect. We grow our own trees and shrubs to ensure top quality, hardy installations.
- Cutting-edge plant health care treatments, including nutritional support, feeding, pest control, and treatment of disease.

"SATISFACTION THAT GROWS!"



Lower Salford Township
 379 Main Street
 Harleysville, PA 19438

PRSR STD
 U.S. POSTAGE
PAID
 PERMIT #640
 DOYLESTOWN, PA

Township Officials

Douglas A. Gifford	Chairman
Douglas M. Johnson	Vice Chairman
Keith A. Bergman	Supervisor
Philip P. Heilman	Supervisor
Christopher R. Canavan	Supervisor
Joseph Czajkowski	Manager
Holly Hosterman	Assistant to the Township Manager



Spring/Summer 2019



This Community Newsletter is produced for the Lower Salford Township by
Hometown Press • 215.257.1500 • All rights reserved*

*Thanks to the generous sponsorship of our advertisers, this newsletter is produced by Hometown Press at no cost to the residents.
 Your support will be greatly appreciated. To Place An Ad Call Denise Morano • 610-346-6126 • DeniseofHTP@yahoo.com*

Content provided by CHROMA GROUP • 267-772-0740



LIGHTING | POWERING | CONNECTING

Connect with us!

@BergeysElectric



2880 Penn Street, Hatfield, PA | 215-723-5518

BergeysElectric.com

Henning's
 www.henningsmarket.com



DELICIOUS CATERING

**HOMEMADE SALADS,
 SIDES & ENTREES**

HOMEMADE BAKERY

**FRESH MARKET
 BUFFET**

COFFEE HOUSE

PIZZERIA

**OPEN EVERY DAY
 7 AM - 11 PM**

290 MAIN STREET | HARLEYSVILLE | PA | 19438 | 215-256-9533

Heritage Breeds

Natural Dense

Quarry Hill Farm

Market

Farm Market

Community

Humane Raised Proteins
 620 Quarry Road + Harleysville, PA + 19438 + 215.513.1514 + quarryhillfarm.net